

*An ergonomic alternative
to manual lifting, intermediate-duty
stacking and pallet positioning
applications.*

CAPACITIES

- 1,500 lb at 24" load center
- 2,200 lb at 24" load center
- 3,000 lb at 24" load center

LIFT HEIGHTS

- 63 inches
- 98 inches
- 118 inches

OPERATION/CONTROLS

- Up/Down lever control mounted on dash
- Operator protection screen
- Excellent forward visibility and pallet handling
- Dual push handles mounted at comfort height level on mast
- Ergonomic spring-loaded steering handle with comfort grip

POWER/HYDRAULIC

- 12 Volt powered lift system, manually propelled
- 12 Volt minimum maintenance deep cycle battery and built-in charger, for 110/1/60 plug-in
- Flow control valve at base of cylinder to regulate lowering speed
- On/Off key switch
- Battery gauge

FORKS/CHASSIS

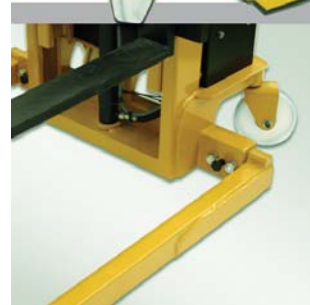
- 42" long forged forks, 31" OD adjustment on pin style carriage
- Straddle legs adjust to three (3) positions for varying pallet sizes
- Channel mast fitted with heavy-duty roller bearings and dual lift chains
- Easy access battery compartment panel
- Foot brake provides extra stability during load lifting/lowering

WHEELS

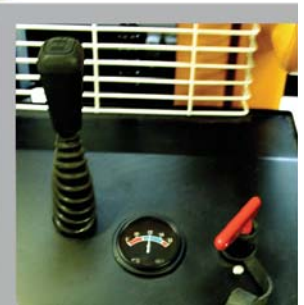
- 3" diameter polyurethane load wheels
- 7" diameter nylon pivot steer wheels

OPTIONAL EQUIPMENT

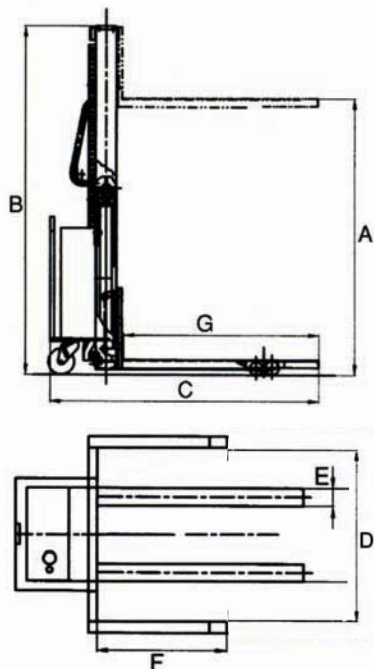
- Consult factory



Adjustable Straddles



Easy Access Controls



Be A Safe Operator.

- Do not operate this truck unless you have been trained and authorized to do so.
- Do not operate this truck until you have checked its condition. Give special attention to tires, battery, controls, lifting systems (including switches), brakes, steering mechanism, guards and safety devices.
- Report the need for truck repairs to your supervisor promptly. Do not operate the truck. Neglect may cause a minor repair to become a major service problem or cause the truck to become unsafe.
- The manual push stacker is intended for use on level surfaces only.
- Do not exceed the rated capacity of the vehicle as marked on the nameplate. Do not lift with the fork tips or one fork only, and be sure load is centered and the 24"(610mm) load center is not exceeded.
- Do not handle unstable or loosely stacked loads. Use special care when handling long, high or wide loads, to avoid tipping, loss of load, or striking bystanders.
- Always look in direction of travel. Keep a clear view and when load obstructs visibility, travel with load trailing (except when climbing ramps).
- Watch swing clearance when turning near walls, racks, pillars or other obstacles.
- Start, stop, change direction, travel and brake smoothly. Slow down for turns and on uneven or slippery surfaces that could cause truck to slide or tip. Be aware that the truck behaves differently without a load than with a load.
- Observe applicable traffic regulations and yield right of way to pedestrians. Slow down and sound horn at all aisle intersections and where vision is obstructed. Do not ride on truck unless equipped with a rider platform.
- Do not carry passengers.

Designation	MODEL		XPS-15		XPS-22			XPS-30			
	Type		-	manual push stacker							
Capacity	lbs.		1500		2200			3000			
Lift Height	A	in.	63	98	63	98	118	63	98	118	
Load Center		in.	24		24			24			
Chassis	Lowered Mast Height	B	in.	79.5	80	79.5	80	80	79.5	80	80
	Raised Mast Height		in.	79.5	117	79.5	117	137	79.5	117	137
	Mast Stages		#	1	2	1	2	2	1	2	2
	Overall Length	C	in.	66		66			66		
	Fork Length	G	in.	42		42			42		
	Fork Width	E	in.	4.8		4.8			4.8		
	Lowered Fork Height		in.	2		2			2		
	Ground Clearance		in.	1.6		1.6			1.6		
Straddles and Wheels	Steering Wheel Dia.		in.	7.9	7.1	7.9	7.1	7.1	7.9	7.1	7.1
	Load Wheel Dia.		in.	3.15		3.15			3.15		
	Adjustable Straddles ID.	D	in.	37.5 / 46 / 53.5		37.5 / 46 / 53.5			37.5 / 46 / 53.5		
	Straddle Length	F	in.	37.6		37.6			37.6		
Performance	Lift Speed - Loaded		in./sec	4.2		4.2	4.9	4.7	4.2	4.9	4.7
	Lift Speed - Unloaded		in./sec	4.2		4.2	4.9	4.7	4.2	4.9	4.7
	Lowering Speed		in.	controlled		controlled			controlled		
	Turning Radius		in.	60 / 86 / 90		60 / 86 / 90			60 / 86 / 90		
	Voltage / Amp Hour / Charger Voltage		V/AH/V	12 / 105 / 110		12 / 105 / 110			12 / 105 / 110		
	Service Weight		lbs.	735	835	920	1030	1095	1010	1160	1290

Performance may vary due to motor and system efficiency tolerances and represents nominal values under typical operating conditions.



85 Heart Lake Road South
 Brampton, Ontario, Canada L6W 3K2
 Phone: 905-457-3900 • Fax: 905-457-2313
 www.BlueGiant.com

AUTHORIZED DISTRIBUTOR

BLUE GIANT EQUIPMENT CORPORATION

BLUE GIANT offers a full line of Loading Dock Equipment including Dock Levelers, Vehicle Restraints, Dock Seals and Shelters and Material Handling Solutions. Concurrent with our continuing product improvement program, specifications are subject to change without notice. Please contact BLUE GIANT for latest information. Some features illustrated may be optional in certain market areas.